

Rural Community Building in Oregon and Siskiyou County, California

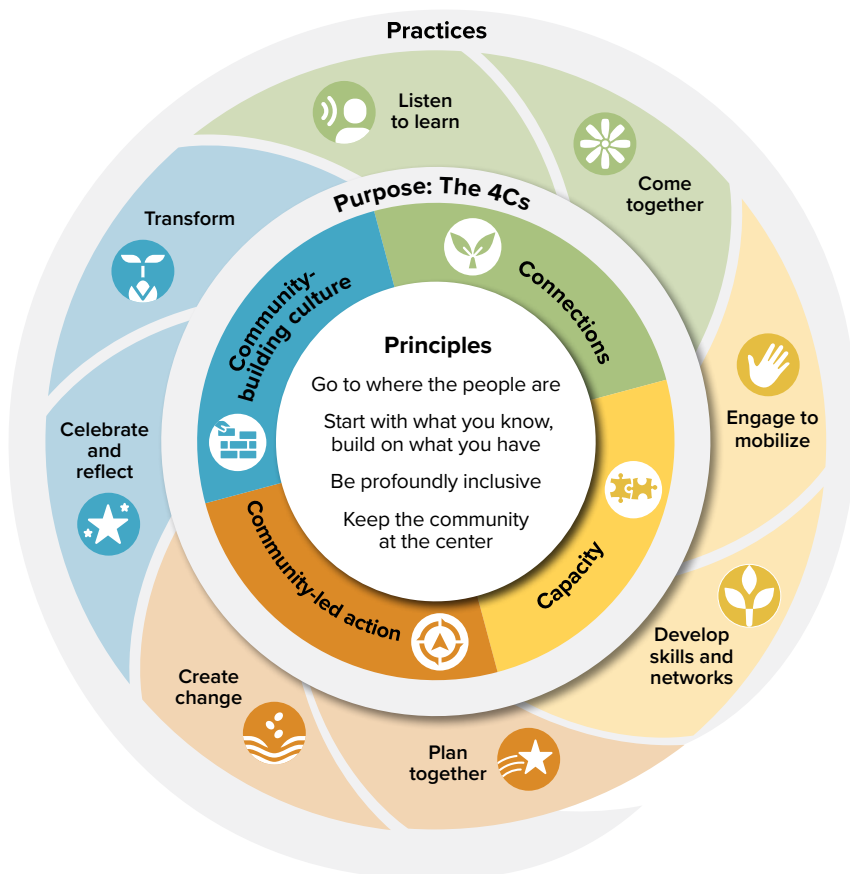
Rural residents leading the way

At The Ford Family Foundation, we know rural residents hold the wisdom about how to improve the well-being of children and families in their communities. We support residents in rural Oregon and Siskiyou County, California, as they take the lead in building their communities' futures.

We work directly with people like you: rural residents, groups and organizations at all stages of their community work, as well as, statewide and regional entities partnering with and supporting rural communities

Community Building Approach

Communities are at the center of our work, starting with where they are and building on their assets. We focus on connections, capacity, community-led action and nurturing a community building culture.



Connections: Building caring, lasting and inclusive relationships

Examples: Holding monthly sessions to share upcoming events, resources and needs. Listening work to better understand the needs and dreams of different parts of the community.



Capacity: Having the people, groups, skills and resources needed to shape the future

Examples: Leaders from the same community attend an overnight training to connect and learn. A group of Latinx leaders forms a statewide network



Community-led Action: Knowing where the community wants to go and taking action to get there

Examples: Developing and implementing community plans and visions. Adapting those plans along the way.



Community Building Culture: Possessing a sense of unity, pride and resiliency

Examples: Residents see themselves in a new light, telling more hopeful stories about their community and its future Taking time to celebrate community achievements.

What We Believe

Communities create the conditions that allow children and families to thrive. They are the backbone of our democracy. We believe that a community works best when it works for all of its members, especially for those who are disadvantaged or excluded due to poverty, race or ethnicity and geography. Our investments provide rural communities with the tools and capacities they need to build a vital future for themselves — a future where every resident can thrive.

Learn more about What We Believe at tfff.org/about

Resources We Can Provide

We can help support your efforts through coaching and mentoring, connecting you to related efforts and resources, providing funding for community listening, gatherings, conversations, trainings, visioning, vision implementation and more. We also can help connect you with other departments and programs at The Ford Family Foundation.

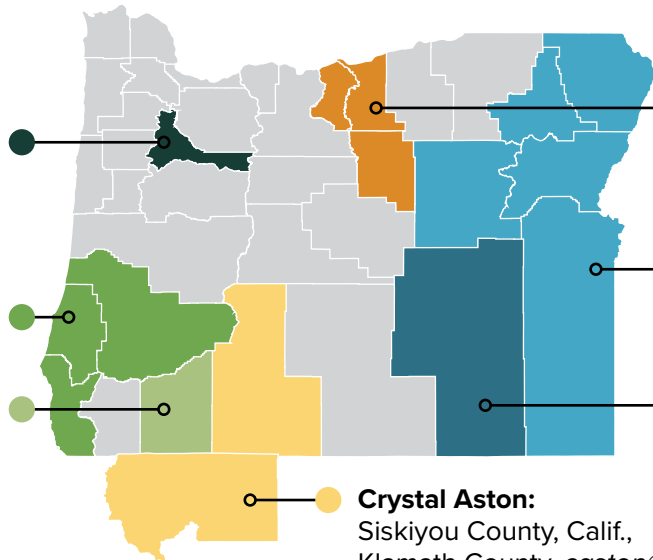
If You Are Interested in Working Together

Share with us a short description of what you are up to and why it feels important. From there, we'll figure it out together. We have Field Coordinators located throughout rural Oregon and Siskiyou County, California, and a team based in Roseburg. Feel free to reach out to one of our staff to discuss your efforts.

Laura Isiordia:
Marion County and Latinx communities throughout rural Oregon and Siskiyou County, lisiordia@tfff.org

Michelle Martin:
Coos, Curry, Douglas counties, mmartin@tfff.org

Nancy Castillo-McKinnis:
Jackson County and Latinx communities throughout rural Oregon, ncastillo-mckinnis@tfff.org



K'Lynn Lane:
Gilliam, Sherman and Wheeler counties, klane@tfff.org

Maurizio Valerio:
Baker, Grant, Malheur, Umatilla, Union and Wallowa counties, mvalerio@tfff.org

Tracy Kennedy:
Harney County and tribal communities throughout region, tkennedy@tfff.org

Crystal Aston:
Siskiyou County, Calif., Klamath County, caston@tfff.org

For all other areas or populations:

● **Alicia Flory**, Senior program associate – Rural Community Building, aflory@tfff.org